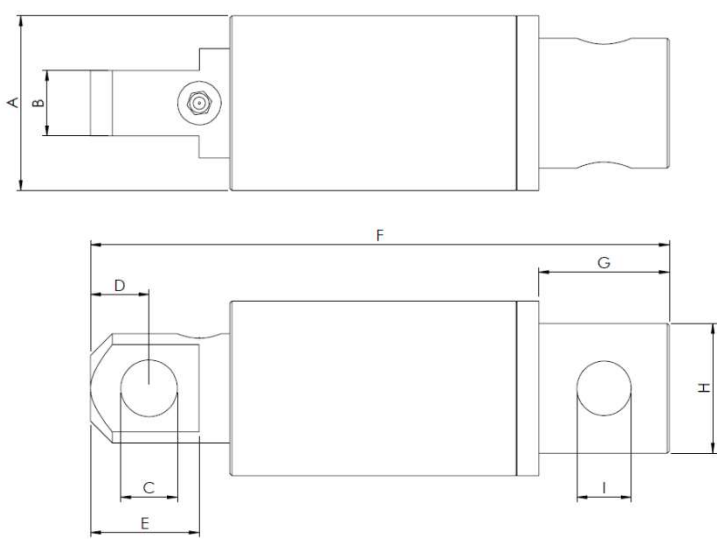
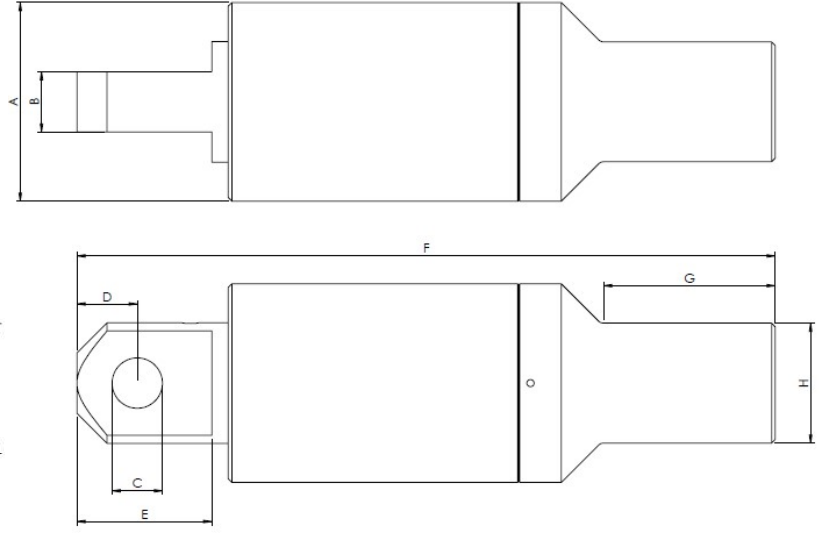


# Swivel Dimensions

**End cap with hole:**



**End cap with thread:**

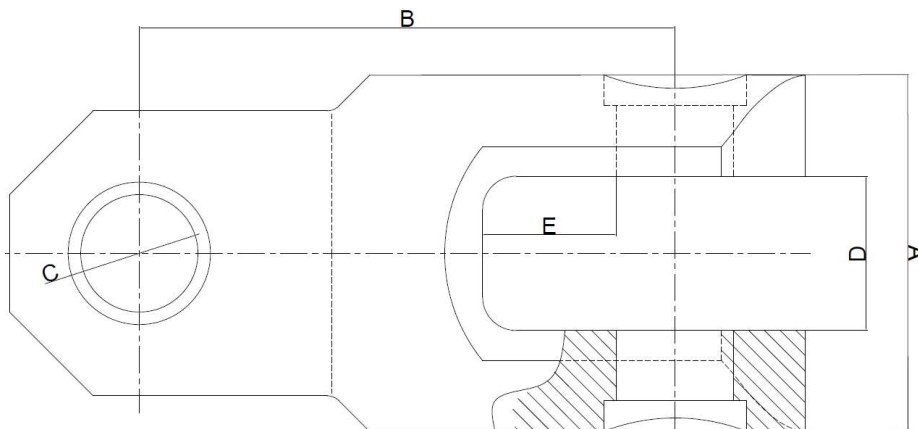


## Dimensions overview

swivel tonnage	end cap	A	B	C	D	E	F	G	H	I
8	with hole	80	30	25	25	50	270	60	60	25
	2 7/8 PAC						320	120	80	
15	with hole	115	45	35	35	80	355	60	60	25
	2 7/8 PAC						400	100	80	
34	3 1/2 IF	160	50	43	50	115	640	180	130	
	4 1/2 IF						605	200	160	
50	3 1/2 IF	200	75	58	60	135	735	160	130	
	4 1/2 IF						755	205	180	
70	3 1/2 IF	230	75	60	65	145	770	160	130	
	4 1/2 IF						780	190	170	
100	3 1/2 IF	280	85	70	85	190	840	200	140	
	4 1/2 IF						970	255	170	
	5 1/2 FH						940	265	205	
200	4 1/2 IF	400	140	96	115	250	1255	260	190	
	5 1/2 FH						1295	310	190	
	6 5/8 FH						1295	320	215	
400	5 1/2 FH	510	180	140	160	340	1485	345	210	
	6 5/8 FH						1485	350	225	

Note that all dimensions are in mm.

## Universal Joint Dimensions



### Dimensions overview

universal joint tonnage	A	B	C	D	E
34	138	190	43	55	53
50	178	210	58	80	51
70	190	300	60	78	70
100	220	317	71	87	104
200	320	470	96	145	132
400	425	640	140	184	160

Note that all dimensions are in mm.